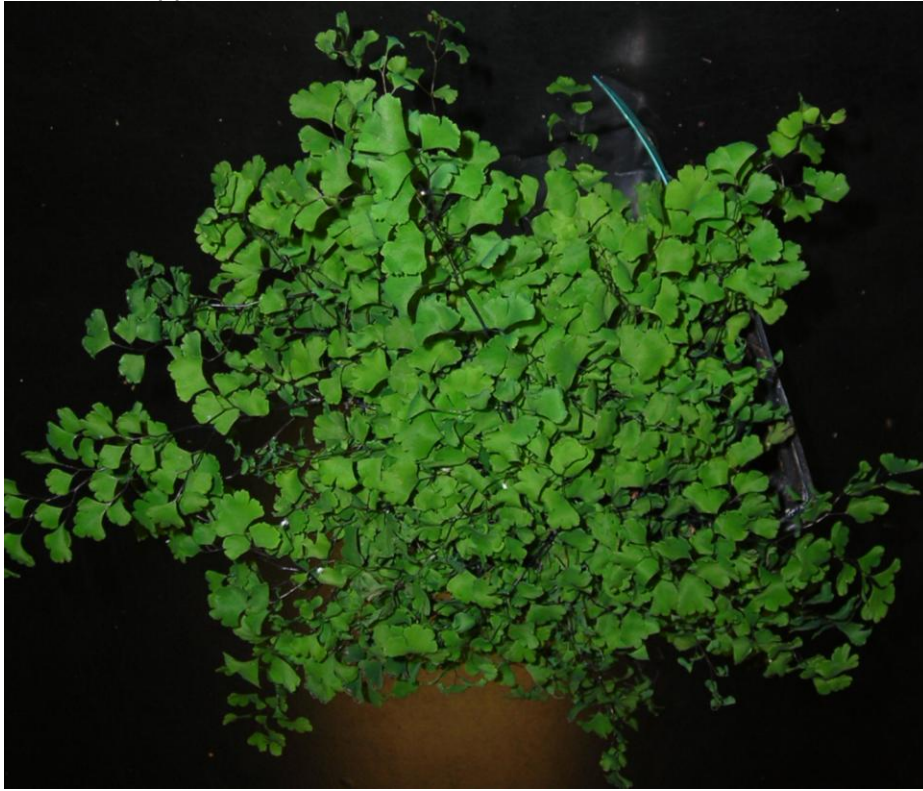


1. *Adiantum* spp. – Maidenhair Fern



2. *Aechmea* cv. – Bromeliad



3. *Agapanthus africanus* – African Lily



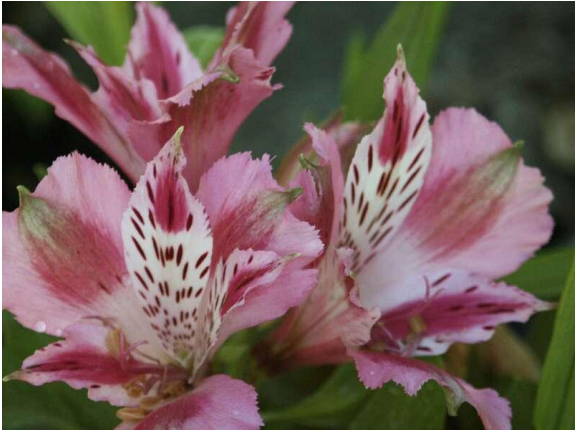
4. *Aglaonema commutatum* cv. – Aglaonema, Chinese Evergreen



5. *Alpinia purpurata* – Red Ginger



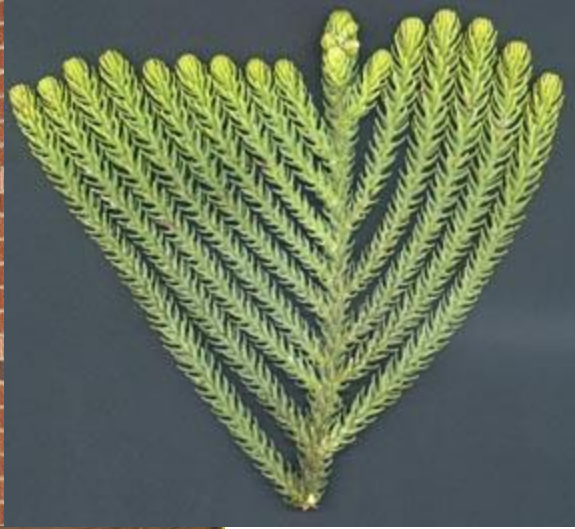
6. *Alstroemeria aurantiaca* – Alstroemeria, Peruvian Lily



7. *Antirrhinum majus* cv. – Snapdragon



8. *Araucaria heterophylla* – Norfolk Island Pine



9. *Asparagus densiflorus* 'Myriocladus' – Ming Fern



10. *Asparagus densiflorus* 'Sprengeri' – Sprengeri Fern



11. *Asparagus setaceus* – Plumosa Fern



12. *Asparagus setaceus* 'Pyramidalis' – Tree Fern



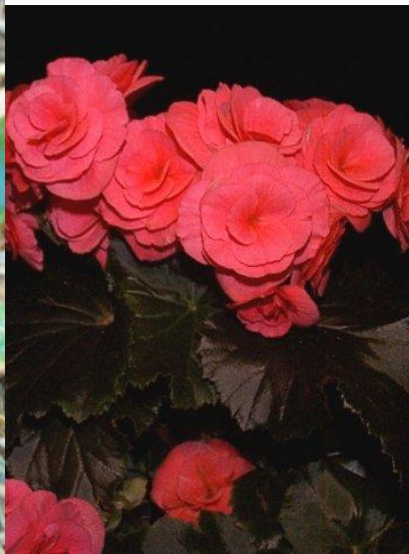
13. *Asplenium nidus* – Bird's Nest Fern



14. *Beaucarnea recurvata* – Ponytail Palm



15. *Begonia x tuberhybrida* cv. – Tuberous Begonia



16. *Brassaia actinophylla* – Schefflera, Octopus Tree



17. *Calathea roseopicta* - Calathea



18. *Callistephus chinensis* hybrids – Chinese Aster



19. *Celosia argentea* cv. – Celosia, Cockscomb



20. *Chamaedorea elegans* – Parlor Palm, Commodore Palm



21. *Chamelaucium uncinatum* – Waxflower



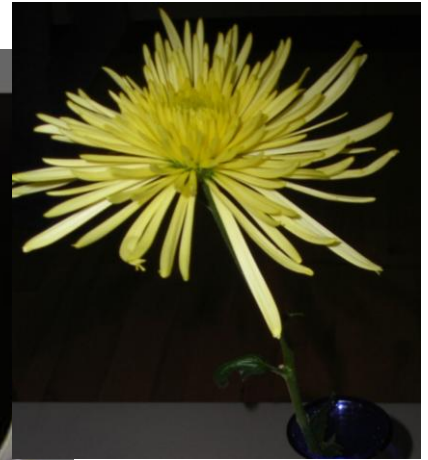
22. *Chlorophytum comosum* var. – Spider Plant



23. *Chrysanthemum x monifolium* cv. – Florist's Chrysanthemum



24. *Chrysanthemum x monifolium* cv. – Spider Chrysanthemum



25. *Codiaeum variegatum* cv. – Croton



26. *Consolida ambigua* cv. – Larkspur



27. *Cordyline terminalis* – Ti Plant



28. *Crassula argentea* – Jade Plant



29. *Cyclamen persicum* cv. – Florist's Cyclamen



30. *Cynara* spp. - Artichoke



31. *Dahlia* cv. - Dahlia



32. *Delphinium elatum* – Delphinium



33. *Dendrobium* spp. – Dendrobium Orchid



34. *Dianthus caryophyllus* cv. – Florists Carnation



35. *Dieffenbachia* spp. – Dumbcane



36. *Dizygotheca elegantissima* – False Aralia



37. *Dracaena deremensis* 'Janet Craig' – Green Corn Plant
Dracaena
Looks like corn plant but it's solid green



Copyright © Cynthia McKenney

38. *Dracaena fragrans* 'Massangeana' – Corn Plant Dracaena



39. *Dracaena marginata* var. – Red-margined Dracaena



40. *Epipremnum aureum* cv. – Golden pothos, Devil's Ivy



41. *Erica carnea* – Spring Heather



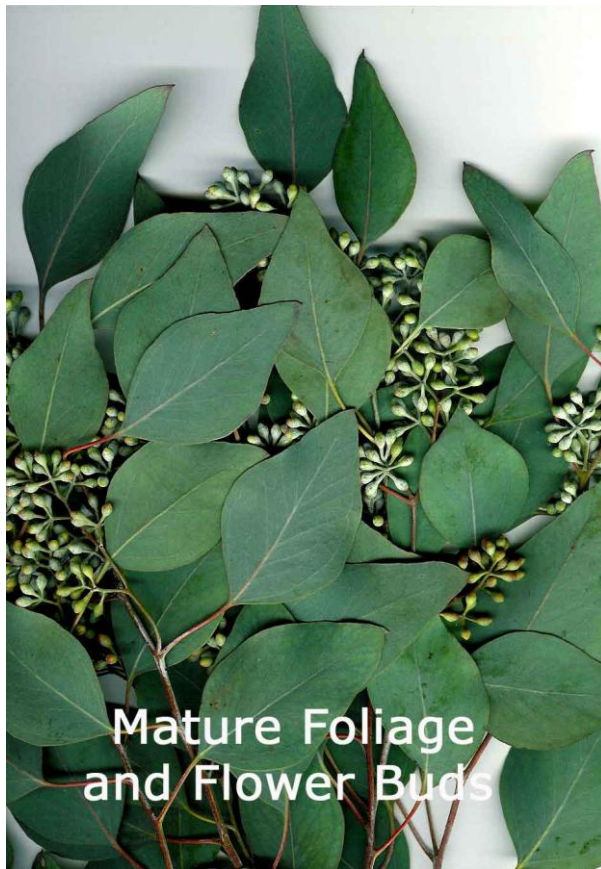
Port Kells Nurseries



42. *Eryngium planum* – Blue Thistle



43. *Eucalyptus* cv. – Eucalyptus



44. *Euphorbia milii* var. – Crown of Thorns



45. *Euphorbia pulcherrima* cv. – Poinsettia



46. *Eustoma grandiflorum* – Lisianthus



47. *Ficus benjamina* 'Exotica' – Benjamin Fig, Weeping Fig



48. *Ficus elastica* 'Decora' – Rubber Tree



49. *Ficus lyrata* – Fiddleleaf Fig



50. *Forsythia x intermedia* – Forsythia



51. *Freesia x hybrida* – Freesia



52. *Galax urceolata* – Galax



©2010 Will Cook

53. *Gaultheria shallon* – Salal, Lemonleaf



54. *Gerbera jamesonii* cv. – Gerbera, Transvaal Daisy



55. *Gladiolus x hortulanus* cv. – Gladiolus



56. *Gypsophila elegans* v. – Baby's Breath



57. *Hedera helix* cv. – English Ivy



58. *Helianthus annuus* cv. – Sunflower



59. *Hippeastrum x hybridum* v. – Amaryllis



60. *Hoya carnosa* cv. – Wax Plant



61. *Hyacinthus orientalis* cv. – Hyacinth



62. *Hydrangea macrophylla* – Hydrangea



63. Hypericum spp. – Hypericum Berries



64. *Iris* spp. – Iris



65. *Kalanchoe blossfeldiana* cv. – Kalanchoe



66. *Liatris spicata* – Liatris



67. *Lilium* cv. 'Oriental' – Asiatic Lily



68. *Lilium* cv. 'Stargazer' – Stargazer Lily

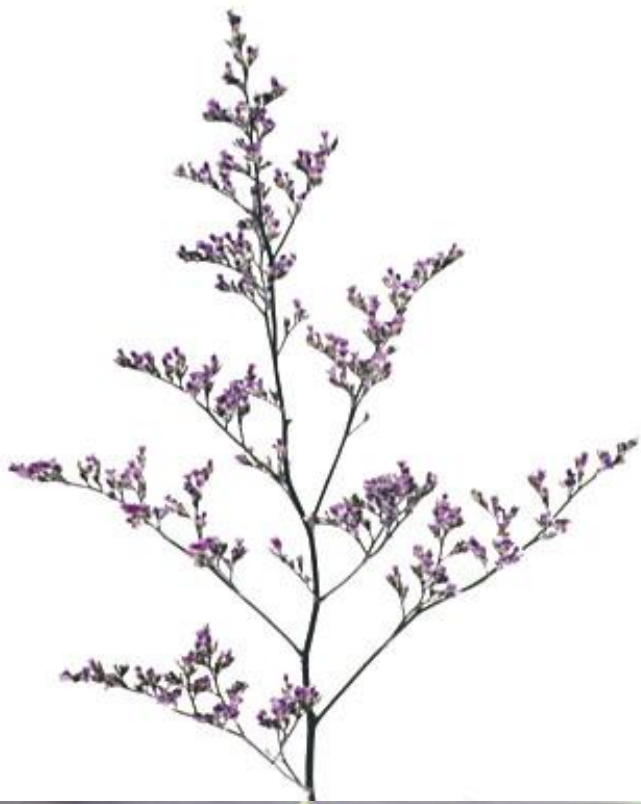




69. *Lilium longiflorum* cv. – Trumpet Easter Lily



70. *Limonium ferulaceum* – Caspia, Misty Blue



71. *Limonium perezii* – Sea Lavender Statice



72. *Limonium sinuatum* cv. - Statice



73. *Maranta leuconeura* cv. – Prayer Plant



74. *Matthiola incana* – Stock



75. *Moluccella laevis* – Bells of Ireland



76. *Monstera deliciosa* – Split-leaf Philodendron



77. *Myrtus communis* – Myrtle



78. *Narcissus hybrid* – Daffodil



79. *Nephrolepis exaltata* cv. – Boston Fern



80. *Nephrolepis cordifolia* cv. – Flat Fern



81. *Pachystachys lutea* cv. – Shrimp Plant



82. *Paeonia lactiflora* cv. – Peony



83. *Pedilanthus tithymaloides* – Zigzag Plant



84. *Peperomia* cv. – Peperomia



85. *Phalaenopsis* cv. – Phalaenopsis, Butterfly Orchid



86. *Philodendron scandens oxycardium* – Heartleaf Philodendron



87. *Pittosporum tobira* cv. – Pittosporum, Mock Orange



88. *Plectranthus australis* - Swedish Ivy



89. *Polianthes tuberosa* - Turberose



90. *Protea* cv. – Protea



91. *Ranunculus asiaticus* - Ranunculus



92. *Rhododendron* cv. – Azalea



93. *Rosa* cv. – Hybrid Tea Rose



94. *Rumohra adiantiformis* – Leatherleaf Fern



95. *Ruscus hypoglossum* – Italian Ruscus



96. *Ruscus hypophyllum* – Israeli Ruscus, Butcher's Broom Ruscus



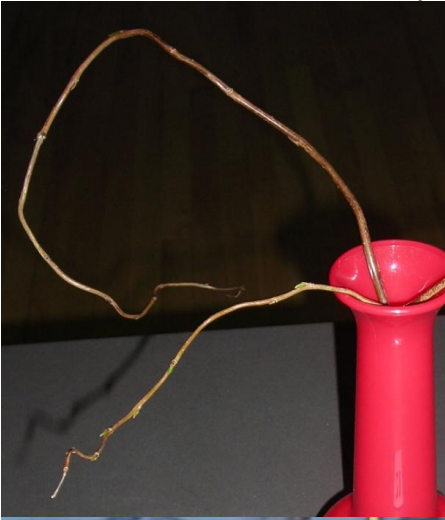
97. *Saintpaulia ionantha* cv. – African Violet



98. *Salix discolor* cv. – Pussy Willow



99. *Salix matsudana* cv. – Curly Willow



100. *Sansevieria trifasciata* cv. – Sansevieria, Snake Plant



101. *Schlumbergera truncata* cv. – Thanksgiving cactus



102. *Solidago canadensis* – Solidago, Goldenrod



103. *Spathiphyllum* spp. – Spathiphyllum, Peace Lily



104. *Stephanotis floribunda* – Stephanotis, Bridal Wreath



105. *Strelitzia reginae* - Bird of Paradise



106. *Syngonium podophyllum* – Nephthytis



107. *Tulipa* cv. – Tulip



108. *Viburnum opulus* cv. - *Viburnum*



109. *Xerophyllum tenax* – Bear Grass



110. *Zantedeschia aethiopica* – Calla



111. *Zebrina pendula* cv. – Wandering Jew



112. Aphid



113. Fungus Gnat



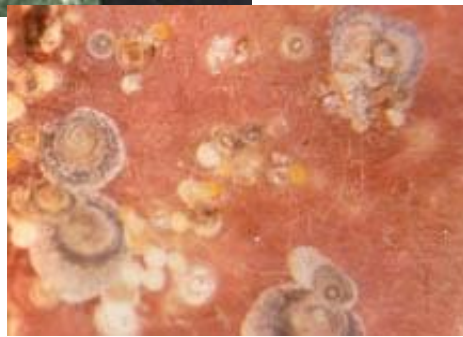
114. Leaf Miner



115. Mealybug



116. Scale



117. Snail/Slug



118. Spider Mite



119. Thrip



120. Whitefly



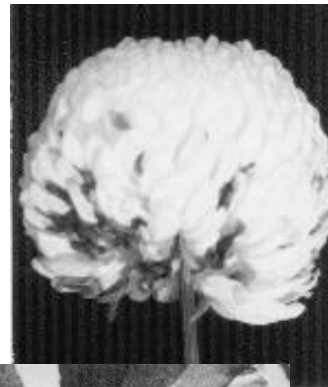
121. Anthracnose



122. Black Spot



123. Botrytis



Causes blossom blight, bud rot, stem canker, stem and crown rot, cutting rot, and leaf blight. First appears as a water-soaking and browning regardless of the tissue affected. A conspicuous, tan to gray fuzzy mold develops on rotted tissue under humid conditions.

124. Damping Off

- Damping off describes the usually sudden destruction of newly germinated seeds or seedlings.



125. Mosaic Virus

- Mosaic virus damage first appears in the form of green leaves which look as if they are mottle or distorted. Often these leaves will also be curled upward, or appear as if their growth has been stunted. Typically these leaves will have yellowish spot on them, adding to their mottled appearance.



Mild mosaic symptoms on squash leaves. Note healthy leaves at bottom of picture.

126. Powdery Mildew

- It appears as white, powdery blotches on the leaves, stems, and buds of the host plant. Late in the year, small black structures called cleistothecia can be seen embedded in the fungal mycelium. This gives the powdery mildew a speckled appearance.

